

# Programming

You've probably already experienced it firsthand. While working with your dataset within the production every day you are forced to work at e.g. Model update, manual steps to repeat. You think that is unproductive? Me too!

Most visualization and design programs have an API, Application Programming Interface, that allows me to program operations and functions on your software.

This will give you, for your daily work with the programs, a set of custom tools that will make you more productive and easier to work with.

Over the years, I've developed tools for clients that streamline workflows. Take advantage of my programming service.

Software packages like:

- Maya, Autodesk
- 3D Studio Max, Autodesk
- Vred Professional, Autodesk
- Unity3d, Unity Technologies
- Blender, Blender Foundation

are professional supported by me.

Let's look close at your everyday production, and I'll find out for you, what you can optimize, so that you can stay faster and better in dealing with your software. If required, I will create a tool kit for you to simplify, structure and optimize your workflow.

Costs for such a programming service are very different and are calculated according to the effort.

See some examples below for this kind of service ...

## Audi – DGM – Exporter



Audi Forum Ingolstadt

For the customer Audi I created an application that converts directly dgn formats.

In the past, Audi converted DGN (Microstation) format manually by pushing the data into Navisworks and saved it as fbx or dwf. This fbx or dwf file was then loaded into VRED for further processing.

The now described GUI for the conversion of DGN data has the goal to eliminate these interactive steps with Navisworks and simplify further processing steps in VRED.



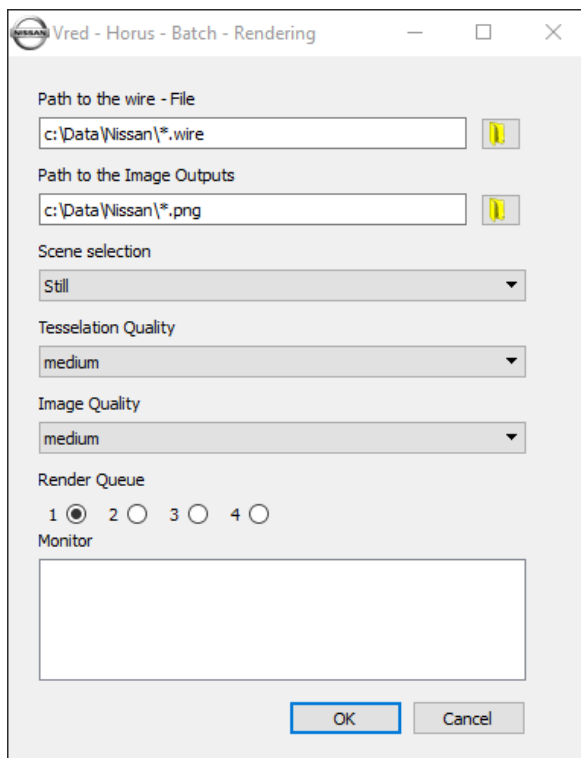
The GUI for converting DGN data works with the programs Navisworks Manager and Vred Professional.

## Nissan Render Queue Manager



Nissan Design Europe

The application I created, for the client Nissan Design Europe, makes it possible to render 3D Alias Design data (\*.wire) directly with Vred Professional without the user having to convert the data before. The Queue Manager allows single images or vehicle driving situations as a finished video sequence. Nissan uses this tool to prepare presentation during the Design Check.



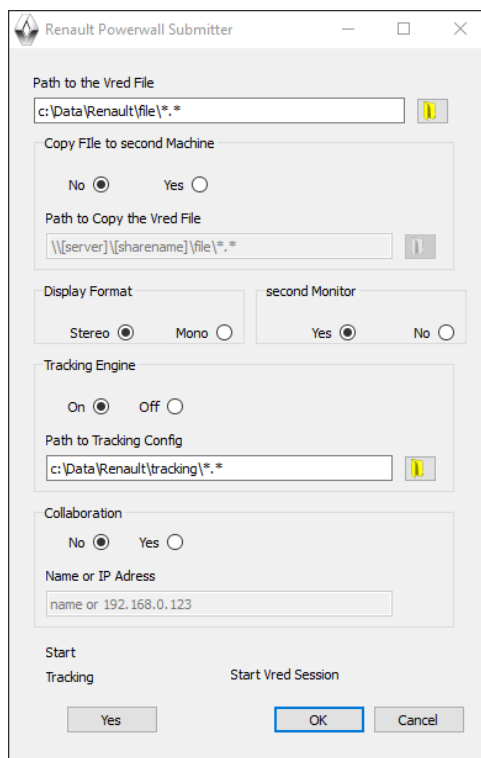
The application can be used to bundle several render clusters, which then process a render job at the same time.

## Renault Powerwall Submitter



Renault Technocentre Guyancourt

For the customer Renault Design, I have created an application that allows design data to be played directly on a powerwall to perform design reviews. The application controls a tracking system, which supplies the Powerwall with a virtual camera. The output of the image is stereoscopic (3Dimensional), so that the viewer perceives the full space of the virtual world.



The application talks to Vred Professional and launches all required components for the presentation.